



PO Box 404 ● Townsville QLD 4810 ● Ph: +61 (0)7 4724 3950 ● [www.reefcheckaustralia.org](http://www.reefcheckaustralia.org)

# Reef Check Vanuatu

## *Pango Village Workshop 2005*

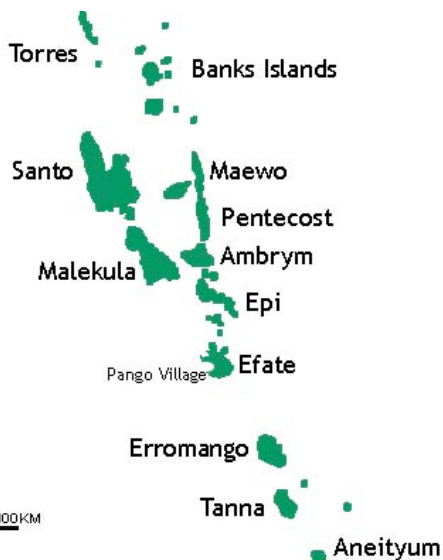


Reef Check Australia's Jos Hill and Reef Check Fiji's Helen Sykes got together this August to help Reef Check Vanuatu coordinator, Mike Lameier run a Reef Check training workshop at Pango village on the island of Efate, Vanuatu.



To ensure sustainable management of marine resources it is essential that the status of these resources and their use be monitored. The Vanuatu government, however, lacks funding to support coral reef monitoring and the status of much of their marine resources is unknown. Building capacity within the community to collect this information through using Reef Check has been identified as a solution.

With the support of AusAID and the US Peace Corps, the Vanuatu Department of Fisheries has pledged act as an umbrella organisation for Reef Check Vanuatu and to store community-gathered Reef Check data, which will be used to assist with marine resource management.

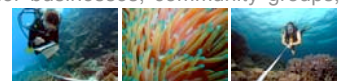


The purpose of this workshop was to establish Reef Check trained individuals at a number of locations around Vanuatu.

Workshop participants have been charged with training their counterparts to establish a network of teams throughout the country who will both report locally to the community, nationally to the Vanuatu Department of Fisheries and Internationally to the Global Coral Reef Monitoring Network.

Reef Check Foundation Ltd. is a non-profit organisation that works with marine park tourism operators and other businesses, community groups, governments and universities to educate the public about the importance of coral reefs and monitor their health.

Banner photo by Quiksilver International



Workshop participants included 18 Ni-Vanuatu representatives of established or planned marine conservation projects, 4 dive guides and 7 new Peace Corps volunteers from the US. Together, these participants represented ?? locations around Vanuatu to include the islands of Malekula, Ambrym, Efaté, Santo, Tanna, Pentecost and the Banks Islands.



Helen Sykes introducing how to create habitat maps from Reef Check data.



Practice Reef Check survey at Vale Vale Conservation Area, Pango Village.

Participants were trained to conduct Reef Check surveys on snorkel, how to present their data to local communities and how to use Reef Check as a tool to establish and manage community marine protected areas.

This workshop was significant because it brought together people from many different projects with many different experiences.

We hope to be receiving data for more sites than have ever been surveyed before coming into the Vanuatu Department of Fisheries throughout this year.....



Workshop participants practicing the fish survey in Pango Village.

Future projects with Vanuatu - expeditions with RCA plus operators



Jos Hill and Dori making underwater tape measures at Pango village.



Helen Sykes briefing workshop participants on the snorkel practice survey exercise. Vale Vale Conservation Area, Pango village.



Healthy branching hard coral at Vale Vale Conservation Area, Pango village.